

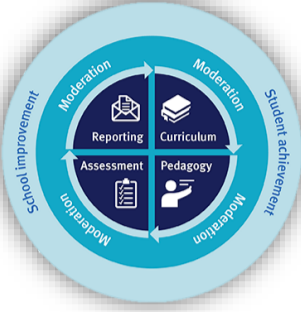
Burrowes State School

Whole School Approach to Pedagogy

A Whole School approach to pedagogy brings an alignment of processes across the school for ALL teachers and leaders, it creates precision in all practices so that differentiated teaching and learning occurs via intentional collaboration.

Theoretical foundation about Curriculum, Learning and Learners. EQUITY AND EXCELLENCE - "The Work"

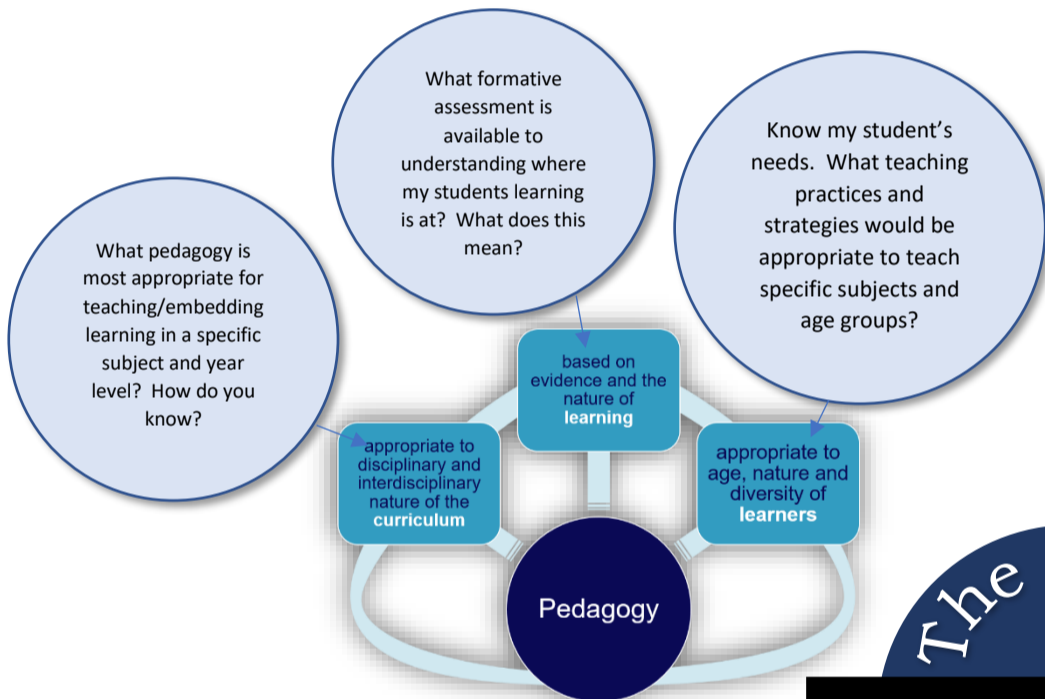
Throughout our pedagogical work we maintain the belief that "Inclusion is a way of thinking about people, diversity, learning and teaching." (Linda Graham)



The lens teachers use to make professional, evidence-based decisions to differentiate teaching and learning and ensure all students experience success and improved learning and achievement.

AAP is an **evidence-based** pedagogical decision-making framework that supports teachers to select and employ a range and balance of effective pedagogical approaches and characteristics that engage young learners, achieve effective learning outcomes and set children up for long term success.

Principles of Pedagogy

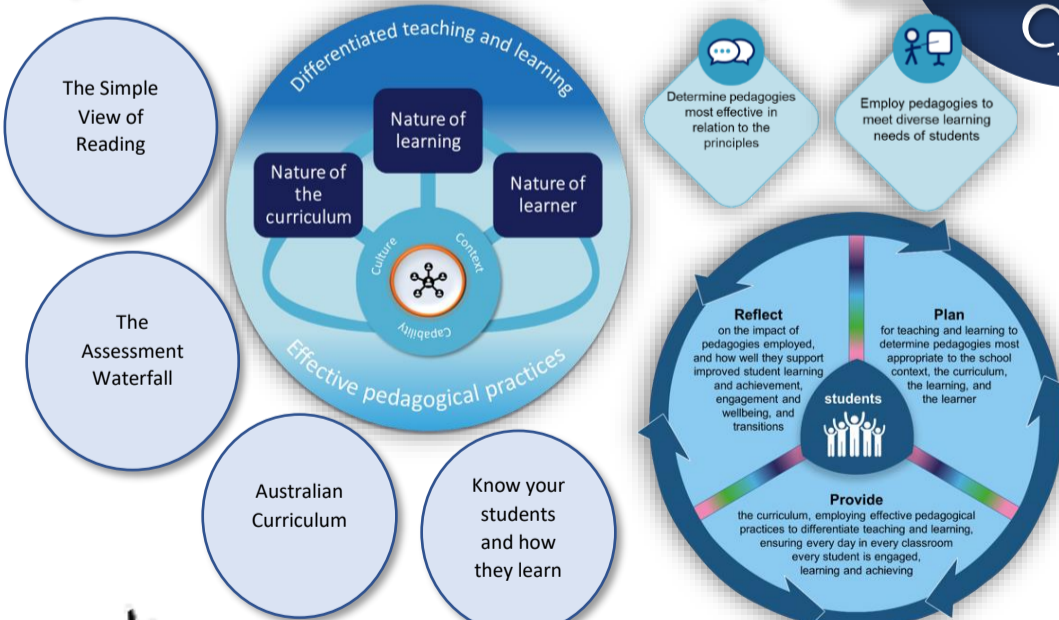


Age Appropriate Pedagogy



The Whole Pedagogy Child

Teacher-directed ← Blended approaches to personalise learning → Student-Centred



Effective Pedagogical Practices



High Impact Teaching Strategies

Informed by Lyn Sharratt, Teach like a Champion and many others.

Any action to ensure effective pedagogical practice that should include promotion of positive learning culture, consideration to school context and genuine commitment to building capability and expertise in teaching teams.

High Impact Teaching Strategies – HITS, are a bank of reliable instructional practices to be used with confidence. HITS add to our tool box, they do not replace already successful strategies you may be using. Check out the BSS Brilliance Guide for more hints and tips.

Practical application through differentiated teaching and learning using BSS Whole School Approach to Differentiation and Support.